

How to build a dinosaur

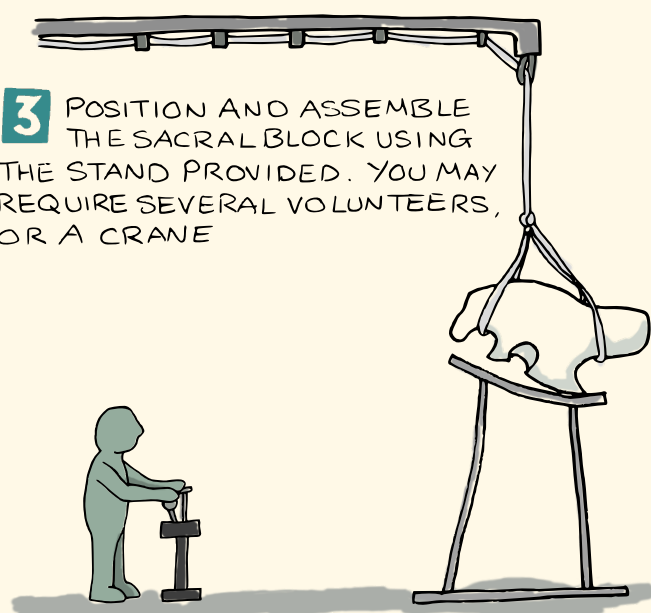
1 OPEN THE PACKAGE AND ENSURE ALL THE PIECES ARE PRESENT



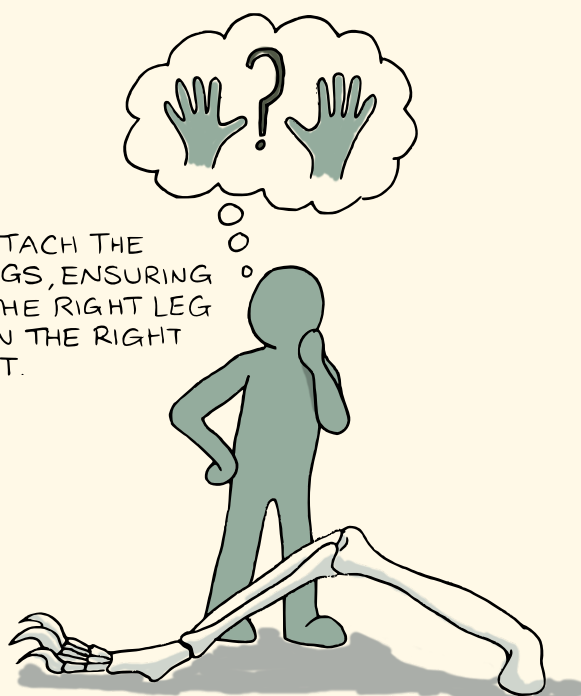
2 READ THE INSTRUCTION MANUAL AND CONSIDER THE ECONOMIC AND ETHICAL RAMIFICATIONS OF OWNING A DINOSAUR



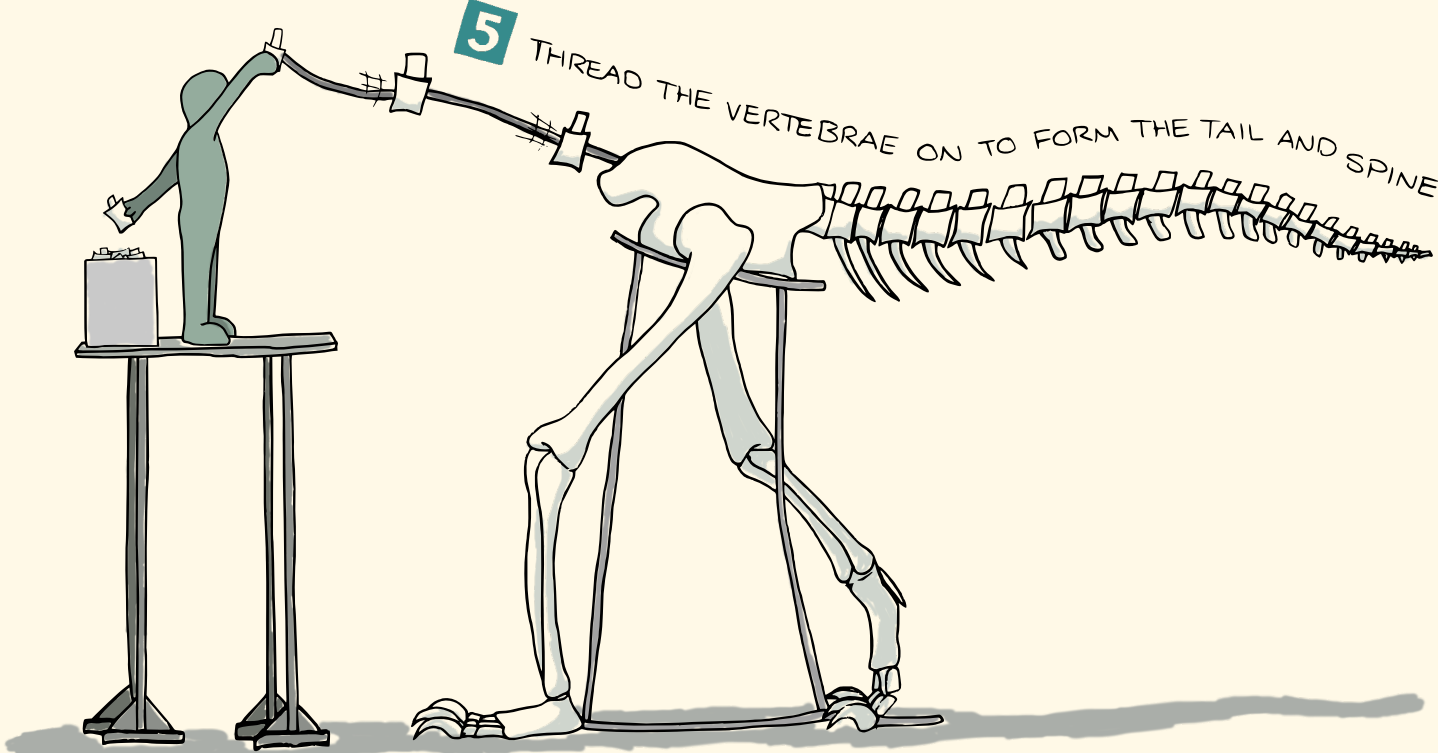
3 POSITION AND ASSEMBLE THE SACRAL BLOCK USING THE STAND PROVIDED. YOU MAY REQUIRE SEVERAL VOLUNTEERS, OR A CRANE



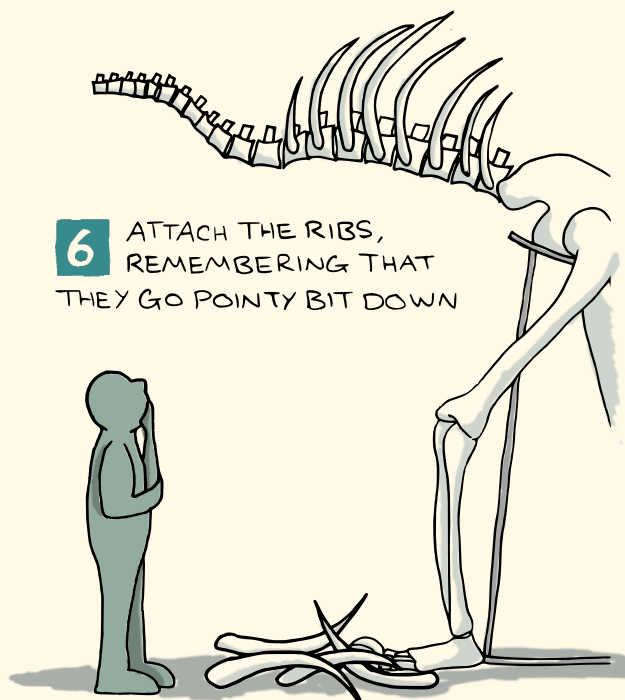
4 ATTACH THE LEGS, ENSURING THAT THE RIGHT LEG GOES IN THE RIGHT SOCKET



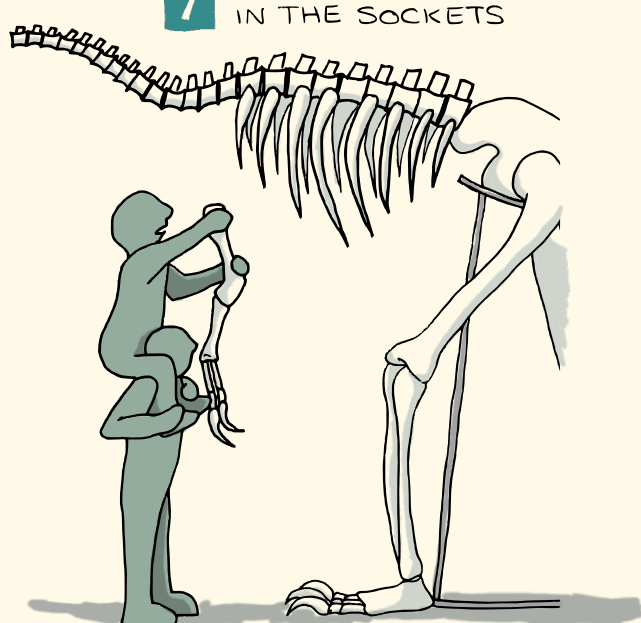
5 THREAD THE VERTEBRAE ON TO FORM THE TAIL AND SPINE



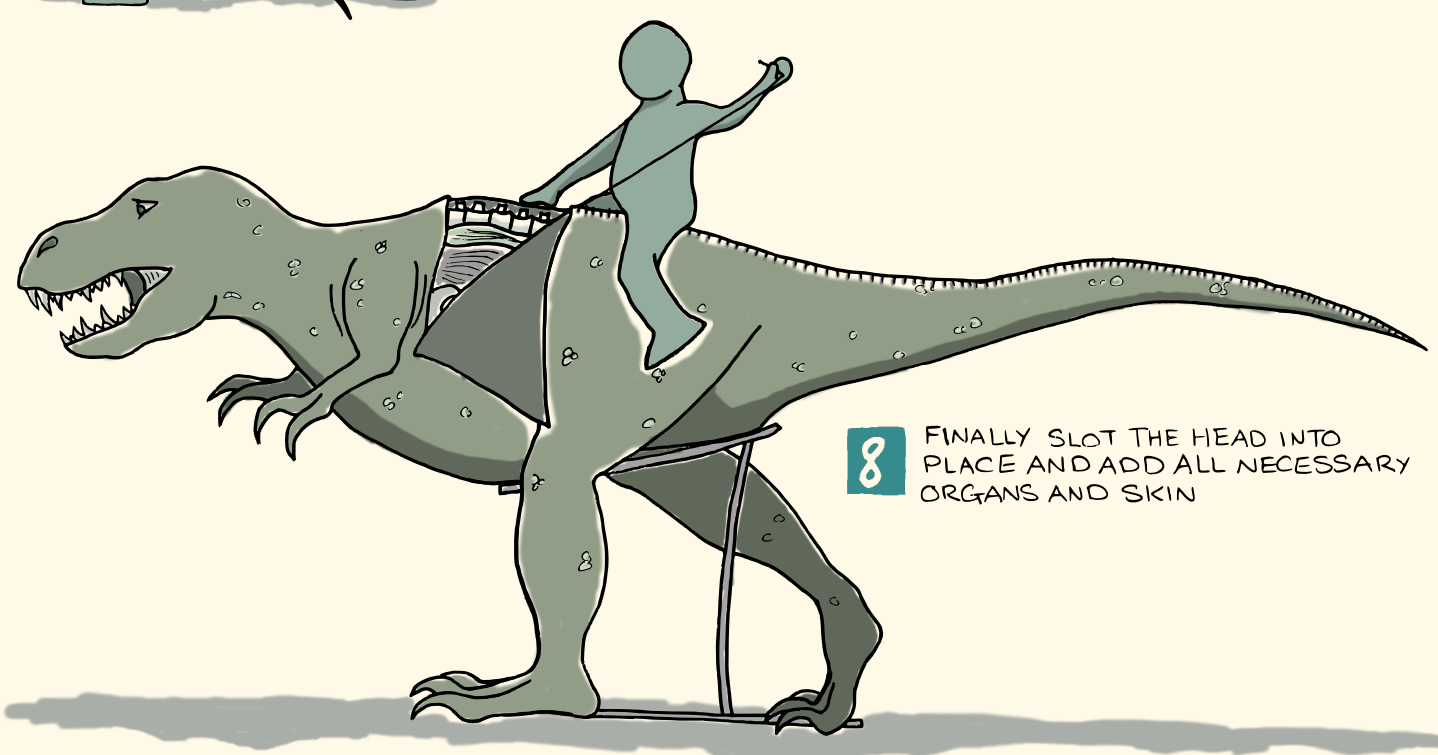
6 ATTACH THE RIBS, REMEMBERING THAT THEY GO POINTY BIT DOWN



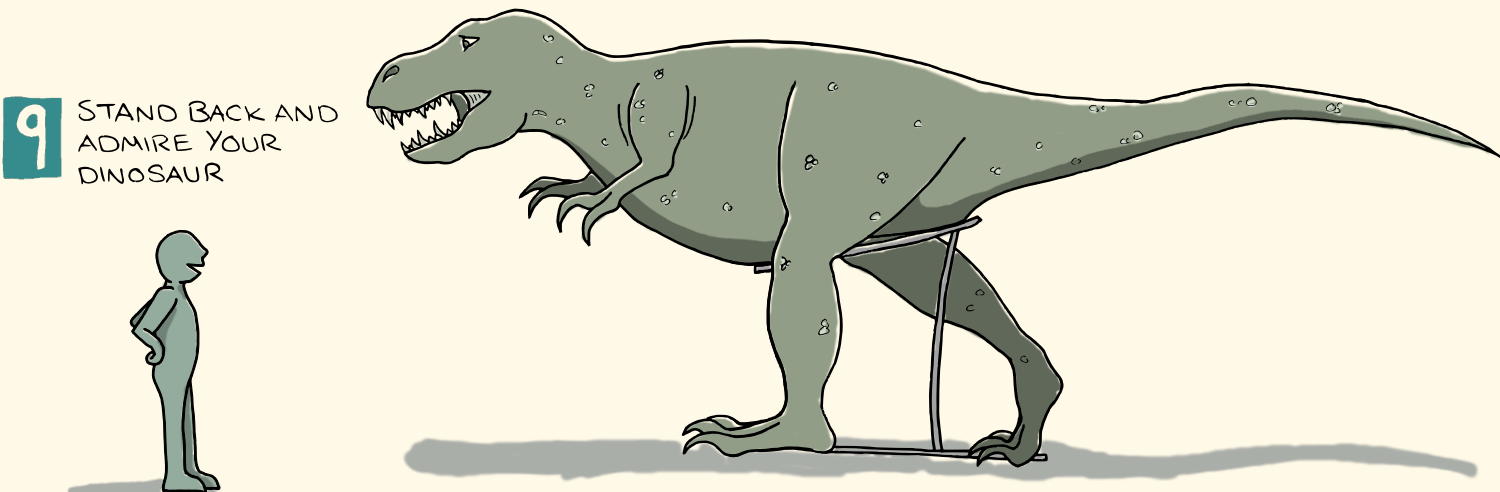
7 POSITION THE ARMS IN THE SOCKETS



8 FINALLY SLOT THE HEAD INTO PLACE AND ADD ALL NECESSARY ORGANS AND SKIN



9 STAND BACK AND ADMIRE YOUR DINOSAUR



10 RUN

