

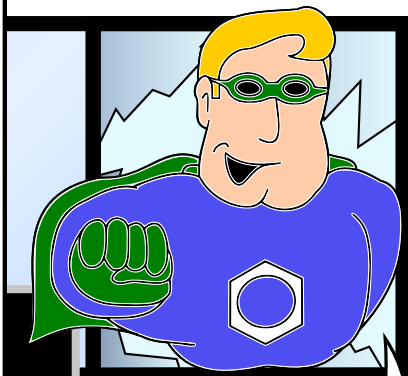
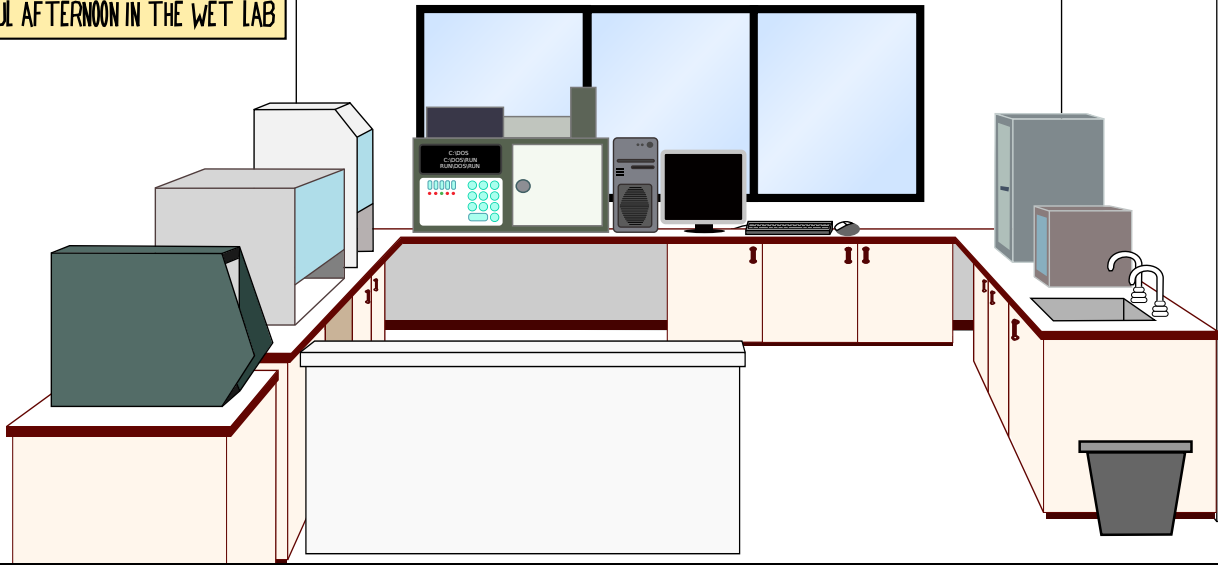
WILL THE MAJOR FIX THE CENTRIFUGE?  
WILL HE CALL THE ENGINEERS?  
OR WILL HE WALK AWAY AND LEAVE  
EVERYONE TO BLAME THE FIRST  
UNDERGRADUATE THAT COMES INTO  
THE LAB?

FIND OUT IN THE NEXT THRILLING ADVENTURE OF

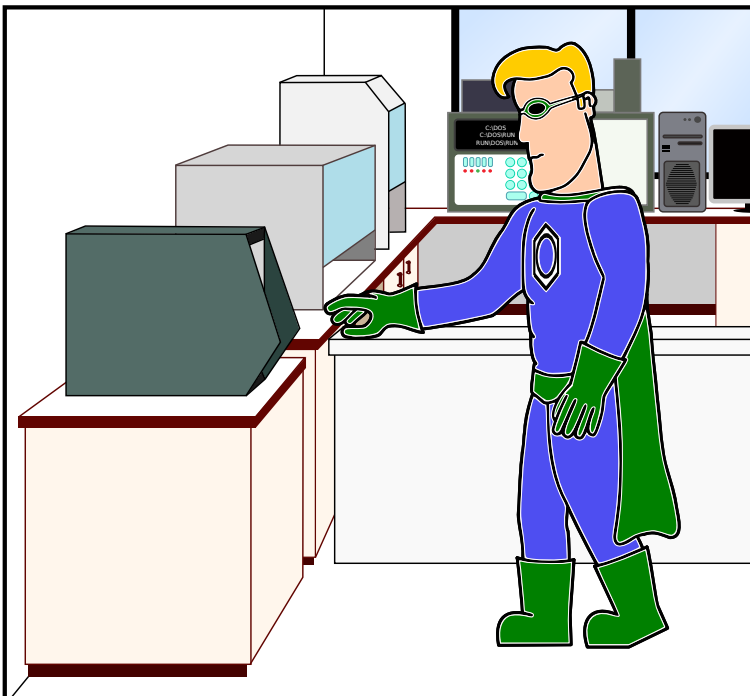
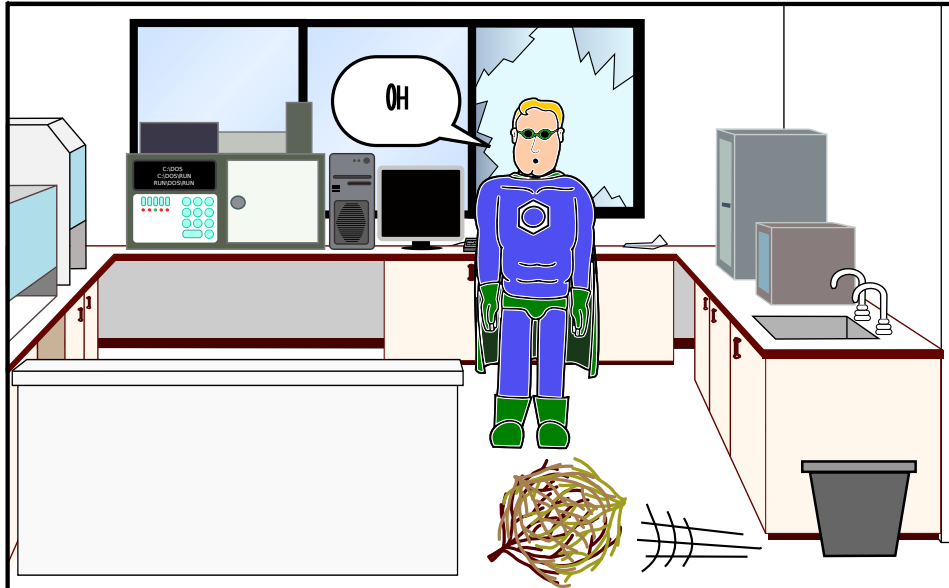


# MAJOR MASS SPEC

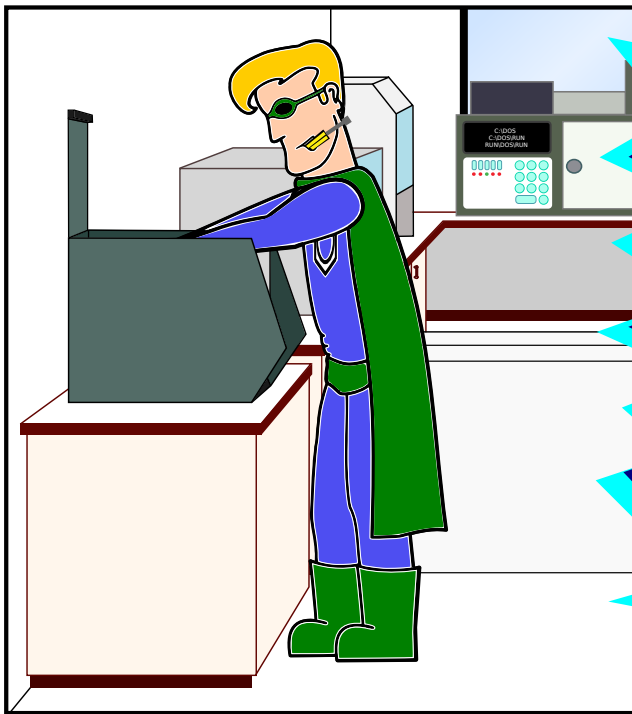
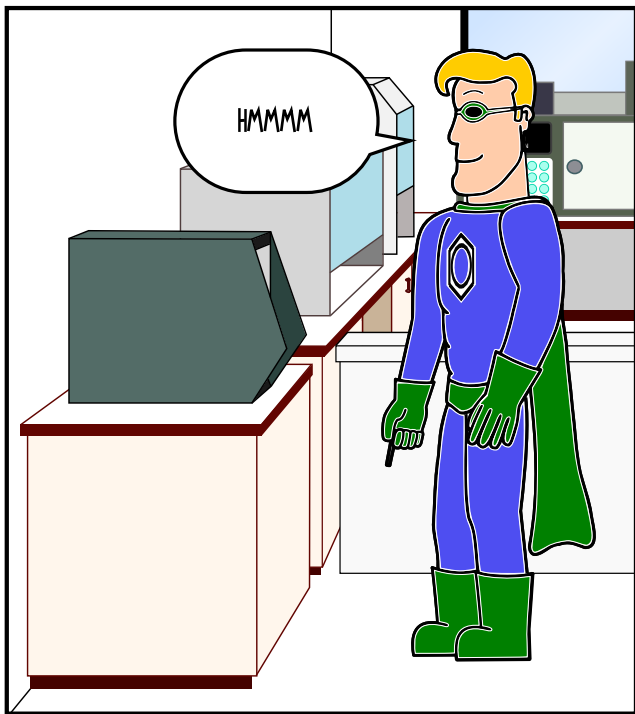
A PEACEFUL AFTERNOON IN THE WET LAB



NEVER FEAR MAJOR MASS



DO NOT USE  
OVER 3000 REV/MIN  
21/05/02



TINKERER

